

SAE Technical Standards Board Rules provide that: "This report is published by SAE to advance the state of technical and engineering sciences. The use of this report is entirely voluntary, and its applicability and suitability for any particular use, including any patent infringement arising therefrom, is the sole responsibility of the user."

SAE reviews each technical report at least every five years at which time it may be reaffirmed, revised, or cancelled. SAE invites your written comments and suggestions.

**AS9432**

FEDERAL SUPPLY CLASS  
5306

# NOTICE

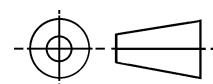
THIS DOCUMENT HAS BEEN TAKEN DIRECTLY FROM U.S. MILITARY SPECIFICATION MS9432 AND CONTAINS ONLY MINOR EDITORIAL AND FORMAT CHANGES REQUIRED TO BRING IT INTO CONFORMANCE WITH THE PUBLISHING REQUIREMENTS OF SAE TECHNICAL STANDARDS. THE INITIAL RELEASE OF THIS DOCUMENT IS INTENDED TO REPLACE MS9432. ANY PART NUMBERS ESTABLISHED BY THE ORIGINAL SPECIFICATION REMAIN UNCHANGED.

THE ORIGINAL MILITARY SPECIFICATION WAS ADOPTED AS AN SAE STANDARD UNDER THE PROVISIONS OF THE SAE TECHNICAL STANDARDS BOARD (TSB) RULES AND REGULATIONS (TSB 001) PERTAINING TO ACCELERATED ADOPTION OF GOVERNMENT SPECIFICATIONS AND STANDARDS. TSB RULES PROVIDE FOR (A) THE PUBLICATION OF PORTIONS OF UNREVISED GOVERNMENT SPECIFICATIONS AND STANDARDS WITHOUT CONSENSUS VOTING AT THE SAE COMMITTEE LEVEL, AND (B) THE USE OF THE EXISTING GOVERNMENT SPECIFICATION OR STANDARD FORMAT.

UNDER DEPARTMENT OF DEFENSE POLICIES AND PROCEDURES, ANY QUALIFICATION REQUIREMENTS AND ASSOCIATED QUALIFIED PRODUCTS LISTS ARE MANDATORY FOR DOD CONTRACTS. ANY REQUIREMENT RELATING TO QUALIFIED PRODUCTS LISTS (QPL'S) HAS NOT BEEN ADOPTED BY SAE AND IS NOT PART OF THIS SAE TECHNICAL DOCUMENT.

SAENORM.COM : Click to view the full PDF of as9432

THIRD ANGLE PROJECTION



ISSUED 1999-08

PREPARED BY SAE COMMITTEE E-25

PROCUREMENT SPECIFICATION: NONE

**SAE** The Engineering Society  
For Advancing Mobility  
Land Sea Air and Space®  
**INTERNATIONAL**  
400 Commonwealth Drive, Warrendale, PA 15096-0001

## **AEROSPACE STANDARD**

BOLT, TEE HEAD - AMS 5735, CHAMFERED,  
.190-32 UNJF-3A

**AS9432**  
SHEET 1 OF 3

Copyright 1999 Society of Automotive Engineers, Inc.  
All rights reserved.

Printed in the U.S.A.

QUESTIONS REGARDING THIS DOCUMENT: (724) 772-8510  
TO PLACE A DOCUMENT ORDER: (724) 776-4970

FAX: (724) 776-0243  
FAX: (724) 776-0790

SAE WEB ADDRESS: <http://www.sae.org>

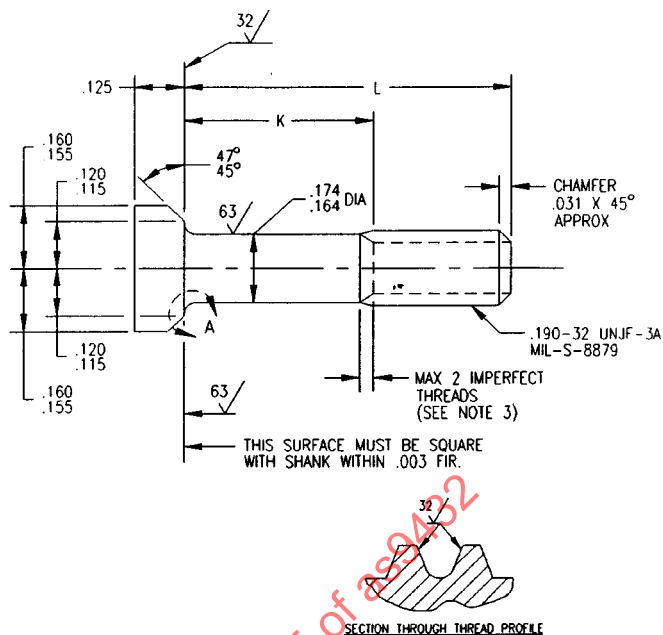
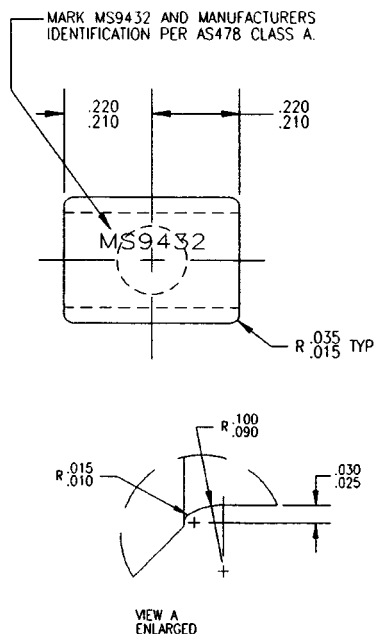


FIGURE 1 - BOLT

TABLE I - PART NUMBERS AND DIMENSIONS

PART NO.	L	K	APPROX WEIGHT LB/100	PART NO.	L	K	APPROX WEIGHT LB/100
MS9432-04	.375	.114-.134	.62	MS9432-21	1.438	.748-.808	1.31
MS9432-05	.438	.114-.134	.66	MS9432-22	1.500	.810-.870	1.35
MS9432-06	.500	.114-.134	.70	MS9432-23	1.562	.872-.932	1.39
MS9432-07	.562	.114-.134	.74	MS9432-24	1.625	.935-.995	1.43
MS9432-08	.625	.114-.134	.78	MS9432-25	1.688	.998-1.058	1.47
MS9432-09	.688	.114-.134	.82	MS9432-26	1.750	1.060-1.120	1.51
MS9432-10	.750	.114-.134	.86	MS9432-27	1.875	1.185-1.245	1.59
MS9432-11	.812	.122-.182	.90	MS9432-28	2.000	1.310-1.370	1.67
MS9432-12	.875	.185-.245	.94	MS9432-29	2.125	1.435-1.495	1.75
MS9432-13	.938	.248-.308	.98	MS9432-30	2.250	1.560-1.620	1.83
MS9432-14	1.000	.310-.370	1.03	MS9432-31	2.375	1.685-1.745	1.91
MS9432-15	1.062	.372-.432	1.07	MS9432-32	2.500	1.810-1.870	1.99
MS9432-16	1.125	.435-.495	1.11	MS9432-33	2.625	1.935-1.995	2.07
MS9432-17	1.188	.498-.558	1.15	MS9432-34	2.750	2.060-2.120	2.16
MS9432-18	1.250	.560-.620	1.19	MS9432-35	2.875	2.185-2.245	2.24
MS9432-19	1.312	.622-.682	1.23	MS9432-36	3.000	2.310-2.370	2.32
MS9432-20	1.375	.685-.745	1.27				