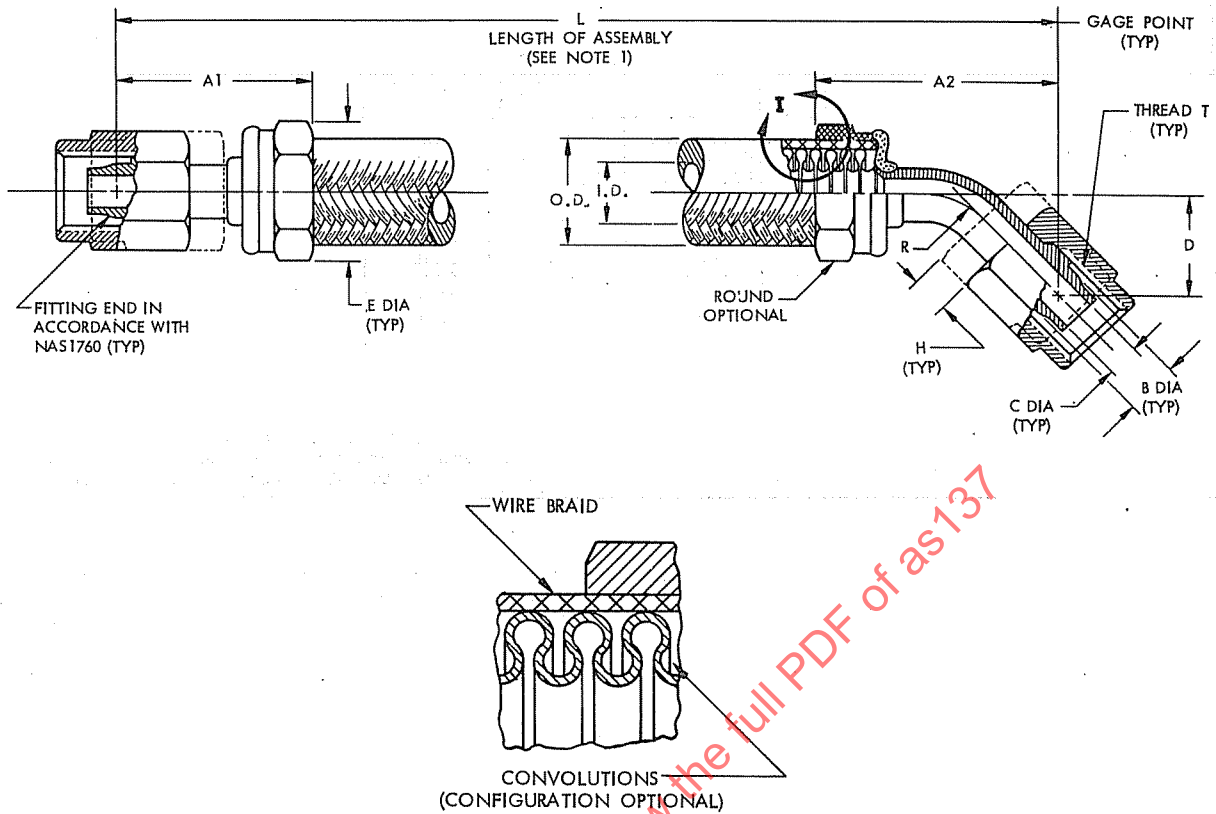


SAE Technical Board rules provide that: "All technical reports, including standards approved and practices recommended, are advisory only. Their use by anyone engaged in industry or trade is entirely voluntary. There is no agreement to adhere to any SAE standard or recommended practice, and no commitment to conform to or be guided by any technical report. In formulating and approving technical reports, the Board and its Committees will not investigate or consider patents which may apply to the subject matter. Prospective users of the report are responsible for protecting themselves against liability for infringement of patents."



DETAIL I

TABLE I

HOSE ASSY. SIZE CODE	HOSE SIZE (REF)	TUBE SIZE (REF)	A		B GAGE DIA. BASIC	C MIN DIA. THRU 4	D		E ENVELOPE DIA. MAX.	H MIN. 2	R (REF)	THREAD T PER MIL-S-8879 (REF)	HOSE	
			A1 MAX.	A2 MAX.			MIN.	MAX.					I.D. MIN.	O.D. MAX.
04	1/4	1/4	1.25	1.62	.2930	.141	.49	.61	.900	.40	.250	.4375-20UNJF-3B	.23	.56
06	3/8	3/8	1.38	1.88	.4120	.250	.54	.73	1.200	.40	.375	.5625-18UNJF-3B	.34	.70
08	1/2	1/2	1.56	2.12	.5600	.360	.67	.92	1.300	.47	.500	.7500-16UNJF-3B	.45	.86
10	5/8	5/8	1.75	2.38	.6730	.455	.83	1.08	1.500	.53	.625	.8750-14UNJF-3B	.57	1.00
12	3/4	3/4	1.94	2.69	.8100	.568	.86	1.11	1.740	.53	.750	1.0625-12UNJ-3B	.70	1.15
16	1	1	2.12	3.19	1.0620	.760	.90	1.15	2.300	.53	1.000	1.3125-12UNJ-3B	.95	1.45
20	1 1/4	1 1/4	2.38	3.69	1.3160	.920	.94	1.32	2.850	.54	1.250	1.6250-12UNJ-3B	1.20	1.75

TABLE II

HOSE ASSEMBLY LENGTH	AVAILABLE LENGTH INCREMENTS	LENGTH TOLERANCE
UNDER 10 INCHES	(NOT LESS THAN) 1/8 INCH	(PLUS OR MINUS) .062 INCH
10 TO 36 INCHES	(NOT LESS THAN) 1/8 INCH	(PLUS OR MINUS) .125 INCH
36 TO 50 INCHES	(NOT LESS THAN) 1/4 INCH	(PLUS OR MINUS) .250 INCH
OVER 50 INCHES	(NOT LESS THAN) 1/2 INCH	(PLUS OR MINUS) 1%