

NFPA®

252

Standard Methods of
Fire Tests of Door Assemblies

2022



NFPA[®] 252

Standard Methods of Fire Tests of Door Assemblies

2022 Edition



NFPA, 1 Batterymarch Park, Quincy, MA 02169-7471
An International Codes and Standards Organization

IMPORTANT NOTICES AND DISCLAIMERS CONCERNING NFPA® STANDARDS




NFPA® codes, standards, recommended practices, and guides (“NFPA Standards”), of which the document contained herein is one, are developed through a consensus standards development process approved by the American National Standards Institute. This process brings together volunteers representing varied viewpoints and interests to achieve consensus on fire and other safety issues. While the NFPA administers the process and establishes rules to promote fairness in the development of consensus, it does not independently test, evaluate, or verify the accuracy of any information or the soundness of any judgments contained in NFPA Standards.

The NFPA disclaims liability for any personal injury, property, or other damages of any nature whatsoever, whether special, indirect, consequential or compensatory, directly or indirectly resulting from the publication, use of, or reliance on NFPA Standards. The NFPA also makes no guaranty or warranty as to the accuracy or completeness of any information published herein.

In issuing and making NFPA Standards available, the NFPA is not undertaking to render professional or other services for or on behalf of any person or entity. Nor is the NFPA undertaking to perform any duty owed by any person or entity to someone else. Anyone using this document should rely on his or her own independent judgment or, as appropriate, seek the advice of a competent professional in determining the exercise of reasonable care in any given circumstances.

The NFPA has no power, nor does it undertake, to police or enforce compliance with the contents of NFPA Standards. Nor does the NFPA list, certify, test, or inspect products, designs, or installations for compliance with this document. Any certification or other statement of compliance with the requirements of this document shall not be attributable to the NFPA and is solely the responsibility of the certifier or maker of the statement.

REVISION SYMBOLS IDENTIFYING CHANGES FROM THE PREVIOUS EDITION

Text revisions are shaded. A  before a section number indicates that words within that section were deleted and a  to the left of a table or figure number indicates a revision to an existing table or figure. When a chapter was heavily revised, the entire chapter is marked throughout with the  symbol. Where one or more sections were deleted, a • is placed between the remaining sections. Chapters, annexes, sections, figures, and tables that are new are indicated with an **N**.

Note that these indicators are a guide. Rearrangement of sections may not be captured in the markup, but users can view complete revision details in the First and Second Draft Reports located in the archived revision information section of each code at www.nfpa.org/docinfo. Any subsequent changes from the NFPA Technical Meeting, Tentative Interim Amendments, and Errata are also located there.

REMINDER: UPDATING OF NFPA STANDARDS

Users of NFPA codes, standards, recommended practices, and guides (“NFPA Standards”) should be aware that these documents may be superseded at any time by the issuance of a new edition, may be amended with the issuance of Tentative Interim Amendments (TIAs), or be corrected by Errata. It is intended that through regular revisions and amendments, participants in the NFPA standards development process consider the then-current and available information on incidents, materials, technologies, innovations, and methods as these develop over time and that NFPA Standards reflect this consideration. Therefore, any previous edition of this document no longer represents the current NFPA Standard on the subject matter addressed. NFPA encourages the use of the most current edition of any NFPA Standard [as it may be amended by TIA(s) or Errata] to take advantage of current experience and understanding. An official NFPA Standard at any point in time consists of the current edition of the document, including any issued TIAs and Errata then in effect.

To determine whether an NFPA Standard has been amended through the issuance of TIAs or corrected by Errata, visit the “Codes & Standards” section at www.nfpa.org.

ADDITIONAL IMPORTANT NOTICES AND DISCLAIMERS CONCERNING NFPA® STANDARDS

Updating of NFPA Standards

Users of NFPA codes, standards, recommended practices, and guides (“NFPA Standards”) should be aware that these documents may be superseded at any time by the issuance of a new edition, may be amended with the issuance of Tentative Interim Amendments (TIAs), or be corrected by Errata. It is intended that through regular revisions and amendments, participants in the NFPA standards development process consider the then-current and available information on incidents, materials, technologies, innovations, and methods as these develop over time and that NFPA Standards reflect this consideration. Therefore, any previous edition of this document no longer represents the current NFPA Standard on the subject matter addressed. NFPA encourages the use of the most current edition of any NFPA Standard [as it may be amended by TIA(s) or Errata] to take advantage of current experience and understanding. An official NFPA Standard at any point in time consists of the current edition of the document, including any issued TIAs and Errata then in effect.

To determine whether an NFPA Standard has been amended through the issuance of TIAs or corrected by Errata, visit the “Codes & Standards” section at www.nfpa.org.

Interpretations of NFPA Standards

A statement, written or oral, that is not processed in accordance with Section 6 of the Regulations Governing the Development of NFPA Standards shall not be considered the official position of NFPA or any of its Committees and shall not be considered to be, nor be relied upon as, a Formal Interpretation.

Patents

The NFPA does not take any position with respect to the validity of any patent rights referenced in, related to, or asserted in connection with an NFPA Standard. The users of NFPA Standards bear the sole responsibility for determining the validity of any such patent rights, as well as the risk of infringement of such rights, and the NFPA disclaims liability for the infringement of any patent resulting from the use of or reliance on NFPA Standards.

NFPA adheres to the policy of the American National Standards Institute (ANSI) regarding the inclusion of patents in American National Standards (“the ANSI Patent Policy”), and hereby gives the following notice pursuant to that policy:

NOTICE: The user’s attention is called to the possibility that compliance with an NFPA Standard may require use of an invention covered by patent rights. NFPA takes no position as to the validity of any such patent rights or as to whether such patent rights constitute or include essential patent claims under the ANSI Patent Policy. If, in connection with the ANSI Patent Policy, a patent holder has filed a statement of willingness to grant licenses under these rights on reasonable and nondiscriminatory terms and conditions to applicants desiring to obtain such a license, copies of such filed statements can be obtained, on request, from NFPA. For further information, contact the NFPA at the address listed below.

Law and Regulations

Users of NFPA Standards should consult applicable federal, state, and local laws and regulations. NFPA does not, by the publication of its codes, standards, recommended practices, and guides, intend to urge action that is not in compliance with applicable laws, and these documents may not be construed as doing so.

Copyrights

NFPA Standards are copyrighted. They are made available for a wide variety of both public and private uses. These include both use, by reference, in laws and regulations, and use in private self-regulation, standardization, and the promotion of safe practices and methods. By making these documents available for use and adoption by public authorities and private users, the NFPA does not waive any rights in copyright to these documents.

Use of NFPA Standards for regulatory purposes should be accomplished through adoption by reference. The term “adoption by reference” means the citing of title, edition, and publishing information only. Any deletions, additions, and changes desired by the adopting authority should be noted separately in the adopting instrument. In order to assist NFPA in following the uses made of its documents, adopting authorities are requested to notify the NFPA (Attention: Secretary, Standards Council) in writing of such use. For technical assistance and questions concerning adoption of NFPA Standards, contact NFPA at the address below.

For Further Information

All questions or other communications relating to NFPA Standards and all requests for information on NFPA procedures governing its codes and standards development process, including information on the procedures for requesting Formal Interpretations, for proposing Tentative Interim Amendments, and for proposing revisions to NFPA standards during regular revision cycles, should be sent to NFPA headquarters, addressed to the attention of the Secretary, Standards Council, NFPA, 1 Batterymarch Park, P.O. Box 9101, Quincy, MA 02269-9101; email: stds_admin@nfpa.org.

For more information about NFPA, visit the NFPA website at www.nfpa.org. All NFPA codes and standards can be viewed at no cost at www.nfpa.org/docinfo.

Copyright © 2021 National Fire Protection Association®. All Rights Reserved.

NFPA® 252

Standard Methods of

Fire Tests of Door Assemblies

2022 Edition

This edition of NFPA 252, *Standard Methods of Fire Tests of Door Assemblies*, was prepared by the Technical Committee on Fire Tests. It was issued by the Standards Council on May 15, 2021, with an effective date of June 4, 2021, and supersedes all previous editions.

This edition of NFPA 252 was approved as an American National Standard on June 4, 2021.

Origin and Development of NFPA 252

The American Society of Testing and Materials (ASTM) adopted *Standard Methods of Fire Tests of Door Assemblies* as a tentative standard in 1940 and as a formal standard in 1941. In 1942, the standard was adopted by the NFPA and approved by the American Standards Association. It was reconfirmed and adopted in 1950 by the Committee on Fire Tests of Building Construction and Materials. In 1953, a new NFPA Committee on Fire Tests was formed by action of the Board of Directors, and recommendations for revision of the standard made by that committee were adopted in 1958, 1969, 1972, 1976, 1979, 1984, and 1990.

The basic procedure covered by this standard was developed by Underwriters Laboratories Inc. and has not undergone any significant revisions to the original concept. The 1995 edition introduced a new provision addressing the neutral plane of the furnace. That provision permits the testing agency to establish the neutral plane of the test furnace to the specification of the particular need by conducting the test under either positive pressure or atmospheric pressure.

The 1999 edition of NFPA 252 contained further editorial refinements to harmonize the procedures and terminology with those found in NFPA 251, *Standard Methods of Tests of Fire Resistance of Building Construction and Materials*; NFPA 257, *Standard on Fire Test for Window and Glass Block Assemblies*; and NFPA 80, *Standard for Fire Doors and Fire Windows*. The 1999 edition also provided greater clarification for the hose stream application and procedure, and the application and reporting of positive pressure testing for door assemblies.

For the 2003 edition, the chapter layout of NFPA 252 was reorganized to meet the *Manual of Style for NFPA Technical Committee Documents*, with minor editorial revisions.

Revisions for the 2008 edition included tighter tolerances for furnace control and the replacement of the detailed hose stream test procedures with a reference to ASTM E2226, *Standard Practice for Application of Hose Stream*.

Revisions to the requirements for furnace pressure and temperatures were made in the 2012 edition.

The 2017 edition included new guidance on calculating pressure gradients.

The 2022 edition includes minor editorial revisions and new definitions of fire protection rating and fire resistance rating.

Technical Committee on Fire Tests

Barry L. Badders, Jr., Chair
Intertek Testing Services, TX [RT]

Benjamin H. Caldwell, Bjarke Ingels Group (BIG), NY [SE]
Karen C. Carpenter, Southwest Research Institute, TX [RT]
Soph R. Davenberry, National Energy Management Institute Committee (NEMIC), VA [L]
Rick D. Davis, National Institute of Standards & Technology (NIST), MD [RT]
Scott E. Dillon, Crane Engineering, MN [SE]
William E. Fitch, Phyrefish.com, FL [SE]
Richard G. Gann, Gaithersburg, MD [SE]
Marcelo M. Hirschler, GBH International, CA [SE]
Paul A. Hough, Armstrong World Industries, Inc., PA [M]
William E. Koffel, Koffel Associates, Inc., MD [SE]
Sergei V. Levchik, Israel Chemicals Ltd. (ICL-IP), NY [M]
 Rep. ACC-North American Flame Retardant Alliance
Michael E. Luna, ICC NTA, LLC., TX [RT]
James Andrew Lynch, The Fire Solutions Group, PA [SE]
John Martell, Professional Fire Fighters of Maine/IAFF, ME [L]
 Rep. International Association of Fire Fighters

Rodney A. McPhee, Canadian Wood Council, Canada [M]
Kathleen A. Newman, Firetect, CA [M]
Nicholas Ozog, Wiss, Janney, Elstner Associates, Inc., IL [SE]
Arthur J. Parker, JENSEN HUGHES, MD [SE]
Bill Perdue, American Home Furnishings Alliance -AHFA, NC [U]
Shamim Rashid-Sumar, National Ready Mixed Concrete Assn., NY [M]
Michael L. Savage, Sr., Marion County Building Safety, FL [E]
Michael Schmeida, Gypsum Association, OH [M]
David T. Sheppard, US Bureau of Alcohol, Tobacco, Firearms & Explosives, MD [RT]
Dwayne Sloan, UL LLC, NC [RT]
Kuma Sumathipala, American Wood Council, VA [M]
Robert J. Wills, American Iron and Steel Institute, AL [M]
Peter J. Willse, AXA XL/Global Asset Protection Services, LLC, CT [I]
Dong Zeng, FM Global, MA [I]
 Rep. FM Global

Alternates

Marc Alam, Canadian Wood Council, Canada [M]
 (Alt. to Rodney A. McPhee)
Richard J. Davis, FM Global, MA [I]
 (Alt. to Dong Zeng)
Timothy Earl, GBH International, MI [SE]
 (Alt. to Marcelo M. Hirschler)
Stephen Paul Fuss, US Bureau of Alcohol, Tobacco, Firearms & Explosives, MD [RT]
 (Alt. to David T. Sheppard)
Justin A. Geiman, Fire and Risk Alliance LLC, MD [SE]
 (Alt. to James Andrew Lynch)
Karl Dana Houser, Intertek, PA [RT]
 (Alt. to Barry L. Badders, Jr.)
Jonathan Humble, American Iron and Steel Institute, CT [M]
 (Alt. to Robert J. Wills)

Marc L. Janssens, Southwest Research Institute, TX [RT]
 (Alt. to Karen C. Carpenter)
Elizabeth C. Keller, Engineering Systems, Inc., NC [SE]
 (Alt. to Scott E. Dillon)
Cori Leffler, Firetect, CA [M]
 (Alt. to Kathleen A. Newman)
Daniel A. Martin, JENSEN HUGHES, MD [SE]
 (Alt. to Arthur J. Parker)
Jason V. Smart, American Wood Council (AWC), VA [M]
 (Alt. to Kuma Sumathipala)
Matthew T. Vinci, International Association of Fire Fighters, DC [L]
 (Alt. to John Martell)
Luke C. Woods, UL LLC, MA [RT]
 (Alt. to Dwayne Sloan)

Nonvoting

Robert H. Barker, American Fiber Manufacturers Association, VA [M]
Rohit “Rik” Khanna, US Consumer Product Safety Commission (CPSC), MD [C]
 Rep. US Consumer Product Safety Commission
Tracy L. Vecchiarelli, NFPA Staff Liaison

Andrew Lock, US Consumer Product Safety Commission, MD [C]
 Rep. US Consumer Product Safety Commission

This list represents the membership at the time the Committee was balloted on the final text of this edition. Since that time, changes in the membership may have occurred. A key to classifications is found at the back of the document.

NOTE: Membership on a committee shall not in and of itself constitute an endorsement of the Association or any document developed by the committee on which the member serves.

Committee Scope: This Committee shall have primary responsibility for documents on fire testing procedures, for reviewing existing fire test standards and recommending appropriate action to NFPA, for recommending the application of and advising on the interpretation of acceptable test standards for fire problems of concern to NFPA technical committees and members, and for acting in a liaison capacity between NFPA and the committees of other organizations writing fire test standards. This Committee does not cover fire tests that are used to evaluate extinguishing agents, devices, or systems.

Contents

Chapter 1 Administration	252- 4	5.2 Mounting.	252- 6
1.1 Scope.	252- 4	5.3 Clearances.	252- 7
1.2 Purpose.	252- 4	5.4 Test Wall.	252- 7
1.3 Application.	252- 4		
Chapter 2 Referenced Publications	252- 4	Chapter 6 Conduct of Tests	252- 7
2.1 General.	252- 4	6.1 Fire Test.	252- 7
2.2 NFPA Publications. (Reserved)	252- 4	6.2 Hose Stream Test.	252- 8
2.3 Other Publications.	252- 4		
2.4 References for Extracts in Mandatory Sections.	252- 5	Chapter 7 Performance Criteria	252- 8
Chapter 3 Definitions	252- 5	7.1 General.	252- 8
3.1 General.	252- 5	7.2 Swinging Doors.	252- 9
3.2 NFPA Official Definitions.	252- 5	7.3 Sliding Doors.	252- 9
3.3 General Definitions.	252- 5	Chapter 8 Report	252- 9
Chapter 4 Control of Fire Test	252- 5	8.1 Results.	252- 9
4.1 Temperature-Time Curve.	252- 5		
4.2 Furnace Temperatures.	252- 5	Annex A Explanatory Material	252- 10
4.3 Unexposed Surface Temperatures.	252- 6	Annex B Commentary	252- 12
Chapter 5 Fire Door Assembly	252- 6	Annex C Informational References	252- 15
5.1 Construction and Size.	252- 6	Index	252- 17

NFPA 252

Standard Methods of

Fire Tests of Door Assemblies

2022 Edition

IMPORTANT NOTE: This NFPA document is made available for use subject to important notices and legal disclaimers. These notices and disclaimers appear in all publications containing this document and may be found under the heading “Important Notices and Disclaimers Concerning NFPA Standards.” They can also be viewed at www.nfpa.org/disclaimers or obtained on request from NFPA.

UPDATES, ALERTS, AND FUTURE EDITIONS: New editions of NFPA codes, standards, recommended practices, and guides (i.e., NFPA Standards) are released on scheduled revision cycles. This edition may be superseded by a later one, or it may be amended outside of its scheduled revision cycle through the issuance of Tentative Interim Amendments (TIAs). An official NFPA Standard at any point in time consists of the current edition of the document, together with all TIAs and Errata in effect. To verify that this document is the current edition or to determine if it has been amended by TIAs or Errata, please consult the National Fire Codes® Subscription Service or the “List of NFPA Codes & Standards” at www.nfpa.org/docinfo. In addition to TIAs and Errata, the document information pages also include the option to sign up for alerts for individual documents and to be involved in the development of the next edition.

NOTICE: An asterisk (*) following the number or letter designating a paragraph indicates that explanatory material on the paragraph can be found in Annex A.

A reference in brackets [] following a section or paragraph indicates material that has been extracted from another NFPA document. Extracted text may be edited for consistency and style and may include the revision of internal paragraph references and other references as appropriate. Requests for interpretations or revisions of extracted text shall be sent to the technical committee responsible for the source document.

Information on referenced and extracted publications can be found in Chapter 2, Annex B, and Annex C.

Chapter 1 Administration

1.1 Scope. This standard prescribes standardized fire and hose stream test procedures that apply to fire door assemblies intended to be used to retard the spread of fire through door openings in fire-resistive walls.

1.2 Purpose.

1.2.1 The purpose of this standard is to prescribe specific fire and hose stream test procedures for fire door assemblies in order to standardize a method for determining the degree of fire protection provided by such assemblies in retarding the spread of fire (flame, heat, and hot gases) through door openings in fire-resistive walls.

1.2.2 The degree of fire protection measured in units of time is not an absolute value because all possible actual fire scenarios are not represented by the standard fire exposure described herein.

1.2.3 This standard allows different fire door assemblies to be compared with each other in order to evaluate their relative performance as measured against a standard fire exposure.

1.3 Application.

1.3.1 This standard is intended to evaluate the ability of a door assembly to remain in a wall opening during a prescribed fire test exposure, which is then followed by the application of a prescribed hose stream.

1.3.2 Tests conducted as described in these standard test methods measure the performance of fire door assemblies during the test exposure and develop data that enable regulatory bodies to require fire door assemblies for use in wall openings where fire protection is required.

1.3.3 The tests described in these standard test methods expose a specimen to a standard fire exposure that is controlled to achieve specified temperatures throughout a specified time period, which is then followed by the application of a specified standard hose stream. The fire exposure, however, is not representative of all fire conditions, which vary with changes in the amount, nature, and distribution of fire loading, ventilation, compartment size and configuration, and heat sink characteristics of the compartment. The fire exposure does, however, provide a relative measure of the performance of fire door assemblies under these specified fire exposure conditions. Similarly, the hose stream exposure is not representative of all applications of actual hose streams used by a fire department during fire suppression efforts.

1.3.4 Any variation from, or change to, the construction or conditions of the door assembly as tested can change the performance characteristics of the fire door assembly.

1.3.5 These tests shall not be construed as determining the suitability of fire door assemblies for continued use after exposure to real fires.

1.3.6 This standard shall not be used to provide the following:

- (1) Full information regarding the performance of specific fire door assemblies where installed in walls constructed of materials other than those tested
- (2) Evaluation of the degree to which the fire door assembly contributes to the fire hazard by generation of smoke, toxic gases, or other products of combustion
- (3) Measurement that determines a limit on the number and size of vision panels permitted or the number and size of lateral openings permitted between the door and frame
- (4) Measurement of the fire door assembly's ability to control or limit the passage of smoke or similar products of combustion through the assembly
- (5) Measurement that determines a specific temperature limit on the unexposed surface of the fire door assembly

Chapter 2 Referenced Publications

2.1 General. The documents or portions thereof listed in this chapter are referenced within this standard and shall be considered part of the requirements of this document.

2.2 NFPA Publications. (Reserved)**2.3 Other Publications.**

2.3.1 ASTM Publications. ASTM International, 100 Barr Harbor Drive, P.O. Box C700, West Conshohocken, PA 19428-2959.

ASTM E119, *Standard Test Methods for Fire Tests of Building Construction and Materials*, 2020.

ASTM E2226, *Standard Practice for Application of Hose Stream*, 2015b (2019).

▲ **2.3.2 UL Publications.** Underwriters Laboratories Inc., 333 Pfingsten Road, Northbrook, IL 60062-2096.

UL 263, *Fire Tests of Building Construction and Materials*, 2011, revised 2014.

2.3.3 Other Publications.

Merriam-Webster's Collegiate Dictionary, 11th edition, Merriam-Webster, Inc., Springfield, MA, 2003.

2.4 References for Extracts in Mandatory Sections.

NFPA 80, *Standard for Fire Doors and Other Opening Protectives*, 2019 edition.

NFPA 101®, *Life Safety Code®*, 2021 edition.

NFPA 221, *Standard for High Challenge Fire Walls, Fire Walls, and Fire Barrier Walls*, 2021 edition.

Chapter 3 Definitions

3.1 General. The definitions contained in this chapter shall apply to the terms used in this standard. Where terms are not defined in this chapter or within another chapter, they shall be defined using their ordinarily accepted meanings within the context in which they are used. *Merriam-Webster's Collegiate Dictionary*, 11th edition, shall be the source for the ordinarily accepted meaning.

3.2 NFPA Official Definitions.

3.2.1 Shall. Indicates a mandatory requirement.

3.2.2 Should. Indicates a recommendation or that which is advised but not required.

3.2.3 Standard. An NFPA Standard, the main text of which contains only mandatory provisions using the word “shall” to indicate requirements and that is in a form generally suitable for mandatory reference by another standard or code or for adoption into law. Nonmandatory provisions are not to be considered a part of the requirements of a standard and shall be located in an appendix, annex, footnote, informational note, or other means as permitted in the NFPA Manuals of Style. When used in a generic sense, such as in the phrase “standards development process” or “standards development activities,” the term “standards” includes all NFPA Standards, including Codes, Standards, Recommended Practices, and Guides.

3.3 General Definitions.

3.3.1 Door Assembly. Any combination of a door, frame, hardware, and other accessories that is placed in an opening in a wall that is intended primarily for access or for human entrance or exit.

3.3.1.1 Fire Door Assembly. Any combination of a fire door, a frame, hardware, and other accessories that together provide a specific degree of fire protection to the opening. [80, 2019]

■ **3.3.2* Fire Protection Rating.** The designation indicating the duration of the fire test exposure to which an opening protective assembly was exposed. [221, 2021]

■ **3.3.3* Fire Resistance Rating.** The time, in minutes or hours, that materials or assemblies have withstood a fire exposure as determined by the tests, or methods based on tests, prescribed by NFPA 101. [101, 2021]

3.3.4 Opening. A through-hole in the fire door assembly that can be seen from the unexposed side while looking through the plane of the assembly from a perpendicular position.

3.3.5 Vision Panel. A glazing material installed in a fire door assembly to allow for viewing through the fire door assembly.

Chapter 4 Control of Fire Test

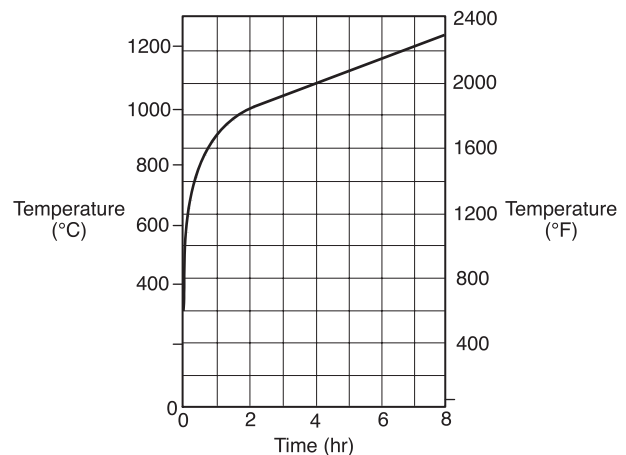
4.1 Temperature-Time Curve.

4.1.1* The temperature inside the furnace to which the fire door assembly is exposed during the fire test shall be controlled to conform to the standard temperature-time curve shown in Figure 4.1.1 for the duration of the fire test.

4.1.2 At the start of the fire test, the ambient laboratory air temperature shall be in the range between 10°C and 32°C (50°F and 90°F).

4.2 Furnace Temperatures.

4.2.1 The temperature of the furnace shall be determined by the average temperature obtained from the readings of not less than nine thermocouples symmetrically disposed and distributed within the furnace to measure the temperature near all parts of the fire door assembly.



Note: The following points determine the curve:

538°C (1000°F)at 5 minutes
704°C (1300°F)at 10 minutes
843°C (1550°F)at 30 minutes
927°C (1700°F)at 1 hour
1010°C (1850°F)at 2 hours
1093°C (2000°F)at 4 hours
1260°C (2300°F)at 8 hours or over

FIGURE 4.1.1 Temperature-Time Curve.

4.2.1.1 The thermocouples shall be protected in one of the following ways:

- (1) By sealed porcelain tubes having a 19 mm ($\frac{3}{4}$ in.) outside diameter and a 3 mm ($\frac{1}{8}$ in.) wall thickness
- (2) By sealed 13 mm ($\frac{1}{2}$ in.) nominal diameter wrought-steel or wrought-iron pipe of standard weight where base-metal thermocouples are used
- (3) By enclosure in protective tubes of such materials and dimensions that the time constant of the protected thermocouple assembly lies within a range of 5.0 minutes to 7.2 minutes

4.2.1.2 The exposed length of the thermocouple protection tube in the furnace chamber shall be not less than 305 mm (12 in.).

4.2.1.3 The junction of the thermocouples shall be 152 mm (6 in.) from the exposed face of the fire door assembly or from the test wall in which the assembly is installed.

Δ 4.2.1.4 During the fire exposure, where the movement of the test sample causes the sample's distance to the end of the thermocouple assembly to vary, the end of the thermocouple assembly shall be reset to 152 mm (6 in.) at intervals not exceeding 10 minutes during the first 30 minutes of the test. Thereafter, the intervals shall be increased to not more than 30 minutes.

4.2.2 The furnace temperature shall be measured and recorded at intervals not exceeding 1 minute during the fire test.

4.2.3 The furnace temperature shall be controlled so that the area under the temperature-time curve, obtained by averaging the results from the furnace temperature readings, is within the following percentages of the corresponding area under the standard temperature-time curve shown in Figure 4.1.1, where t is time in minutes:

- (1) 15 percent for $5 < t \leq 10$
- (2) $(15 - 0.5 [t - 10])$ percent for $10 < t \leq 30$
- (3) $(5 - 0.083 [t - 30])$ percent for $30 < t \leq 60$
- (4) 2.5 percent for $t > 60$

4.2.4 At any time after the first 10 minutes of the test, the temperature recorded by any thermocouple in the furnace shall not differ from the corresponding temperature of the standard temperature-time curve by more than 100°C (212°F).

4.3 Unexposed Surface Temperatures. Temperatures of the unexposed surface of the fire door shall be recorded during the first 30 minutes of the fire test and shall be determined in accordance with 4.3.1 through 4.3.4.

4.3.1 Unexposed surface temperatures shall be measured at not fewer than three points on the door surface, with at least one thermocouple for each 1.5 m² (16 ft²) of the door.

4.3.1.1 Thermocouples shall not be located over reinforcements extending through the door, over vision panels, or within 305 mm (12 in.) of the edge of the door.

4.3.2 Unexposed surface temperatures shall be measured with thermocouples placed under thermocouple pads that meet the requirements specified in 4.3.4.

4.3.2.1 The pads shall be held against the surface of the door.

4.3.2.2 The thermocouple leads shall be positioned under each pad for a length of not less than 89 mm (3½ in.), with the hot junction under the center of each pad.

4.3.2.3 The thermocouple leads under each pad shall not be heavier than 0.82 mm² (18 AWG) and shall be electrically insulated with heat-resistant and moisture-resistant coatings.

4.3.3 Unexposed surface temperatures shall be measured at intervals not exceeding 1 minute.

Δ 4.3.4 Thermocouple pads shall meet the following requirements or otherwise shall be demonstrated to be equivalent by comparative tests in accordance with ASTM E119, *Standard Test Methods for Fire Tests of Building Construction and Materials*, or UL 263, *Fire Tests of Building Construction and Materials*:

- (1) Length and width, 152 mm ± 3.2 mm (6 in. ± ⅛ in.)
- (2) Thickness, 10.2 mm ± 1.3 mm (0.40 in. ± 0.05 in.)
- (3) Thermal conductivity [at 65°C (150°F)], 0.55 ± 0.0039 W/m·K (0.38 ± 0.027 Btu·in./hr·ft²·°F)

Chapter 5 Fire Door Assembly

5.1 Construction and Size.

5.1.1 The design, construction, materials, workmanship, hardware, and size of the fire door assembly, which can consist of single doors, doors in pairs, special-purpose doors (e.g., Dutch doors, double-egress doors), or multisection doors, shall represent those for which a fire protection rating is desired.

5.1.2 A floor structure shall be provided as part of the opening in the test wall.

5.1.2.1 The floor structure shall be of noncombustible material and shall project into the furnace for a distance that is not less than twice the thickness of the fire door or to the limit of the frame, whichever is greater.

5.1.2.2 A floor structure shall not be required to be part of the opening in the test wall where the floor structure interferes with the operation of the door.

5.2 Mounting.

5.2.1 Swinging doors shall be mounted to swing into the furnace chamber.

5.2.2 Sliding and rolling doors shall be mounted on the exposed side of the opening in the test wall that encloses the furnace chamber.

Δ 5.2.3 Slide-type elevator doors shall be mounted on the unexposed side of the opening in the test wall that encloses the furnace chamber.

5.2.4 Access-type door assemblies and chute-type door assemblies shall be mounted with one door arranged to swing into the furnace chamber and another door arranged to swing away from the furnace chamber.

5.2.5 Dumbwaiter doors and service-counter doors shall be mounted on the exposed side of the opening in the test wall that encloses the furnace chamber.

5.2.6 Door frames shall be evaluated when mounted to verify that the doors open either away from or into the furnace chamber, at the discretion of the testing authority, to obtain representative information on the performance of the construction under test.

5.2.7 Surface-mounted hardware (fire-exit devices) for use on fire doors shall be evaluated under conditions where it is instal-

led on one door arranged to swing into the furnace chamber and on another door arranged to swing away from the furnace chamber.

5.2.8 The fire door assembly shall be installed in the test wall opening in the manner in which it is intended to be used.

5.2.8.1 Such mounting as described in 5.2.7 shall not prevent unrestricted operation of the fire door.

5.2.8.2 Clearances shall be provided in accordance with Section 5.3.

5.3 Clearances.

5.3.1 Clearances for swinging doors installed in the test wall opening shall be permitted to have a tolerance up to -1.6 mm ($-\frac{1}{16}$ in.) as follows:

- (1) 3 mm ($\frac{1}{8}$ in.) along the top
- (2) 3 mm ($\frac{1}{8}$ in.) along the hinge and latch jambs
- (3) 3 mm ($\frac{1}{8}$ in.) along the meeting edges of doors in pairs
- (4) 10 mm ($\frac{3}{8}$ in.) at the bottom edge of a single swinging door
- (5) 6 mm ($\frac{1}{4}$ in.) at the bottom edge of a pair of doors

5.3.2 Clearances for horizontal sliding doors installed in the test wall opening and not mounted within guides shall be as follows with a -3 mm ($-\frac{1}{8}$ in.) tolerance:

- (1) 13 mm ($\frac{1}{2}$ in.) between the door and the test wall surfaces
- (2) 10 mm ($\frac{3}{8}$ in.) between the door and the floor structure
- (3) 6 mm ($\frac{1}{4}$ in.) between the meeting edges of center-parting doors

5.3.2.1 A maximum overlap of 102 mm (4 in.) of the door over the test wall opening at the sides and top shall be provided.

5.3.3 Clearances for vertical sliding doors installed in the test wall opening and mounted within guides shall be as follows with a -3 mm ($-\frac{1}{8}$ in.) tolerance:

- (1) 13 mm ($\frac{1}{2}$ in.) between the door and the test wall surfaces along the top or bottom door edges, or both, with guides mounted directly to the wall surface
- (2) 5 mm ($\frac{3}{16}$ in.) between the meeting edges of biparting doors
- (3) 5 mm ($\frac{3}{16}$ in.) between the door and the floor structure

5.3.4 Clearances for horizontal slide-type elevator doors installed in the test wall opening shall be as follows with a -3 mm ($-\frac{1}{8}$ in.) tolerance:

- (1) 10 mm ($\frac{3}{8}$ in.) between the door and the test wall surfaces
- (2) 10 mm ($\frac{3}{8}$ in.) between multisection door panels
- (3) 10 mm ($\frac{3}{8}$ in.) at the bottom edge of a panel

5.3.4.1 Multisection door panels shall overlap 19 mm ($\frac{3}{4}$ in.).

5.3.4.2 Door panels shall overlap the test wall opening 19 mm ($\frac{3}{4}$ in.) at sides and top.

5.4 Test Wall.

5.4.1 The test wall in which the fire door assembly is mounted and tested shall have the strength and fire resistance to retain the assembly throughout the fire and hose stream tests.

5.4.2 The test wall shall be constructed of materials representative of the wall construction in which the fire door assembly is intended to be installed.

5.4.3 When used, wall anchors shall be compatible with the test wall in which the fire door assembly is installed.

Chapter 6 Conduct of Tests

6.1 Fire Test.

6.1.1 Duration. The fire test shall be conducted until the desired fire protection rating period is reached or until failure to meet any of the performance criteria specified in Chapter 7 occurs.

6.1.2 Furnace Pressure. The vertical pressure distribution within the furnace shall be measured and controlled in accordance with 6.1.2.1 through 6.1.2.8.

6.1.2.1 The vertical pressure distribution within the furnace shall be measured by at least two pressure-sensing probes separated by a minimum vertical distance one half of the test sample height inside the furnace.

6.1.2.2 When required, the pressure gradient shall be calculated by dividing the difference in pressure measurements of two probes by the vertical distance separating the probes. The location of the calculated neutral pressure plane shall not deviate more than 914 mm (3 ft) in height from any pressure probe location.

6.1.2.3 The pressure-sensing probes shall be as shown in either Figure 6.1.2.3(a) or Figure 6.1.2.3(b).

6.1.2.4 The pressure-sensing probes shall be located within 152 mm (6 in.) of the vertical centerline of the furnace opening.

6.1.2.5 The pressure at each location shall be measured using a differential pressure instrument capable of reading in graduated increments no larger than 5 Pa (0.02 in. wg), with a precision of not more than 1.25 Pa (0.005 in. wg).

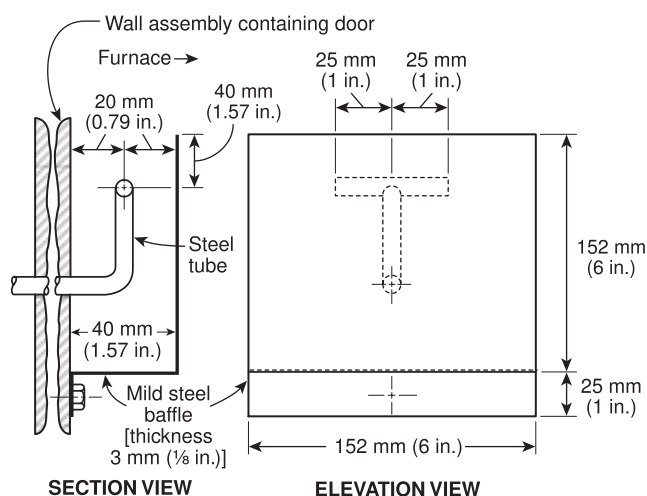


FIGURE 6.1.2.3(a) Static Pressure-Sensing Probe Dimensions.

6.1.2.6 The differential pressure measurement instrument shall be located to minimize stack effects caused by vertical runs of pressure tubing between the pressure-sensing probes and the differential pressure measurement instrument locations.

6.1.2.7 The neutral pressure plane shall be established in accordance with 6.1.2.7.1 or 6.1.2.7.2.

6.1.2.7.1 When the fire test is to be conducted at positive pressure, the neutral pressure plane in the furnace shall be established at not more than 1016 mm ± 152 mm (40 in. ± 6 in.) above the bottom of the door. The furnace control settings required to establish the neutral pressure plane at 1016 mm ± 152 mm (40 in. ± 6 in.) above the sill shall be determined prior to the initiation of the test. Such settings shall be pursued from the beginning of the test in order to establish control of the furnace pressure as soon as possible, but in no case later than 5 minutes after the beginning of the test. The furnace pressure shall be considered to be under control when the furnace operates with pressure variations of no more than 5 Pa (0.02 in. w.g.) at any one pressure probe within any 30 second interval. After the first five minutes of the test, a neutral pressure plane at a location higher than 1016 mm ± 152 mm (40 in. ± 6 in.) above the sill shall not be permitted, with the exception of durations occurring not longer than 60 seconds.

6.1.2.7.2 When the fire test is to be conducted at other than positive pressure, the neutral pressure plane shall be established at not more than 152 mm (6 in.) above the top of the door ± 25 mm (± 1 in.). The pressure shall be controlled to prevent the neutral plane from falling below the top edge of the door for the duration of the test.

6.1.2.8 The furnace pressure shall be measured and recorded throughout the fire test at intervals not exceeding 10 seconds.

6.2 Hose Stream Test.

6.2.1* Within the 2 minutes immediately following the fire test, the fire-exposed side of the fire door assembly shall be subjected to the impact, erosion, and cooling effects of a standard hose stream, unless otherwise permitted by 6.2.2.

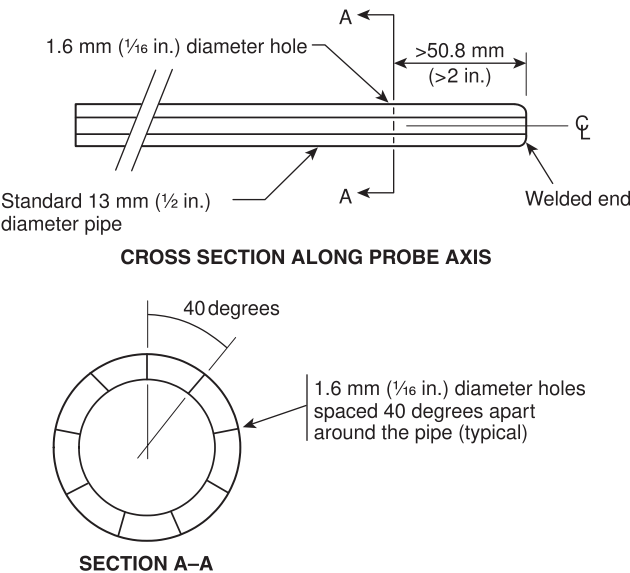


FIGURE 6.1.2.3(b) Pressure-Sensing Probe.

6.2.2* For 20-minute fire protection-rated fire door assemblies, at the option of the test sponsor, the hose stream test shall not be required to be performed.

6.2.3 The test equipment and test procedures for conducting the hose stream test shall be as described in ASTM E2226, *Standard Practice for Application of Hose Stream*.

6.2.4 The water pressure and duration of application shall be as specified in Table 6.2.4.

Table 6.2.4 Water Pressure at Base of Play Pipe and Application for Hose Stream

Desired Rating	Water Pressure at Base of Play Pipe		Application for Exposed Area	
	kPa	psi	sec/m ²	sec/ft ²
3 hr and over	310	45	32	3.0
1½ hr and over and less than 3 hr	207	30	16	1.5
1 hr and over and less than 1½ hr	207	30	10	0.9
Less than 1 hr	207	30	6	0.6

6.2.5 If the required duration of the hose stream test has not been reached after this procedure has been performed, the procedure shall then be reversed and followed until the required duration has been met.

6.2.6* Exposed Area.

6.2.6.1 The hose stream shall be applied over the exposed area of the fire door assembly in accordance with the criteria specified in Table 6.2.4.

6.2.6.2 The exposed area shall be calculated using the outside dimensions of the fire door assembly including the door frames.

Chapter 7 Performance Criteria

7.1 General.

7.1.1 The fire door assembly shall meet the performance criteria specified in this chapter during both the fire test and the hose stream test unless otherwise indicated.

7.1.2 The fire door assembly shall remain in the test wall opening.

7.1.3 The fire door assembly shall not develop any openings in the door assembly, except as permitted by 7.1.3.1 through 7.1.3.4.

7.1.3.1 Openings created by glazing material breakage in the central area of each individual glazed light in any vision panel shall not exceed 5 percent of the area of the glazed light during the hose stream test.

7.1.3.2 Openings created by separation of the glazing material edges from the glazing frame due to movement away from the frame shall not exceed 30 percent of each individual glazed light perimeter during the hose stream test.

7.1.3.3 Separation shall be permitted between meeting edges of pairs of doors in accordance with 7.3.1, 7.3.4, and 7.3.10.

7.1.3.4 Clearances shall be permitted at the bottom edges of doors in accordance with 7.3.1 through 7.3.4.

7.1.4 No flaming shall occur on the unexposed surface of the door assembly during the first 30 minutes of the fire test, except that intermittent flames not greater than 152 mm (6 in.) in length shall be permitted to occur for periods not to exceed 10 seconds. Flaming shall be permitted to occur multiple times at the same or different locations as long as flame duration of each occurrence does not exceed 10 seconds.

7.1.5 After 30 minutes of the fire test, intermittent flames not greater than 152 mm (6 in.) in length shall be permitted to occur along the edges of doors for periods not to exceed 5 minutes.

7.1.6 For doors having a fire test duration of 45 minutes or greater, flames not greater than 152 mm (6 in.) in length shall be permitted to occur on the unexposed surface area of the door during the last 15 minutes of the fire test, provided that the flames are contained within a distance of 38 mm (1½ in.) from a vertical door edge, within 76 mm (3 in.) from the top edge of the door, and within 76 mm (3 in.) from the top edge of the frame of a vision panel.

7.1.7 Hardware.

7.1.7.1 Where hardware is evaluated for use on fire doors, it shall keep the door in the closed position for a fire test duration of not less than the fire protection rating of the door assembly in which it is installed, and the latch bolt shall remain projected and intact.

7.1.7.2 The hardware shall not be required to be operable following the tests.

7.2 Swinging Doors.

7.2.1 For swinging doors, any portion of the edges adjacent to the door frame shall not move from its original position in a direction perpendicular to the plane of the doors for a distance greater than the door thickness during the fire test or greater than 1½ times the door thickness during the hose stream test.

7.2.2 For swinging doors mounted in pairs, any portion of the meeting edges of each of the doors shall not move from its original position in a direction perpendicular to the plane of the doors for a distance greater than the door thickness away from the adjacent door edge.

7.2.3 Swinging doors mounted in pairs, incorporating an astragal, shall not separate in a direction parallel to the plane of the doors by more than 19 mm (¾ in.) along the meeting edges or a distance equal to the throw of the latch bolt at the latch location.

7.2.4 Swinging doors mounted in pairs, without an overlapping astragal, for a fire test duration of 1½ hours or less, shall not separate along the meeting edges by more than 10 mm (⅜ in.).

7.2.5 A single swinging door shall not separate from the door frame by more than 13 mm (½ in.) at the latch location.

7.2.6 Door frames to be evaluated with doors shall remain fastened to the test wall on all sides and shall not develop open-

ings between the frame and the doors or between the frame and the adjacent test wall.

7.3 Sliding Doors.

7.3.1 Sliding doors mounted on the face of the test wall shall not move away from the wall more than 73 mm (2⅞ in.).

7.3.2 Sliding doors mounted in guides shall not release from the guides, and the guides shall not loosen from the fastenings.

7.3.3 The bottom bar of rolling steel doors shall not separate from the floor structure by more than 19 mm (¾ in.).

7.3.4 The meeting edges of center-parting horizontal sliding doors and biparting vertical sliding doors shall not separate from each other by a distance greater than the door thickness measured in a direction perpendicular to the plane of the doors.

7.3.5 The meeting edges of center-parting horizontal sliding doors and biparting vertical sliding doors, without an overlapping astragal, for a fire test duration of 1½ hours or less, shall not separate from each other in a direction parallel to the plane of the doors by more than 10 mm (⅜ in.).

7.3.6 The meeting edges of center-parting horizontal sliding doors, incorporating an astragal, shall not separate from each other in a direction parallel to the plane of the doors by more than 19 mm (¾ in.) or a distance equal to the throw of the latch bolt at the latch location.

7.3.7 The bottom edge of service-counter doors or single-slide dumbwaiter doors shall not separate from the sill by more than 10 mm (⅜ in.).

7.3.8 Astragal.

7.3.8.1 A resilient astragal, where provided, shall not develop openings during the fire test.

7.3.8.2 Not more than 5 percent of the area of the astragal shall be permitted to develop openings during the hose stream test.

7.3.9 The lap edges of horizontal slide-type elevator doors, including the lap edges of multisection doors, shall not move from the test wall or adjacent door surfaces so as to develop a separation of more than 73 mm (2⅞ in.).

7.3.10 The meeting edges of center-parting horizontal slide-type elevator door assemblies, for a fire test duration of 1½ hours or less, shall not separate from each other by more than 32 mm (1¼ in.) as measured in any horizontal plane.

Chapter 8 Report

8.1 Results.

8.1.1 Results shall be reported in accordance with the performance of the fire door assembly subjected to the tests as prescribed in these test methods.

8.1.2 The report shall include, but shall not be limited to, the following information:

- (1) A description of the construction details and materials used to construct the test wall in which the fire door assembly is mounted for testing

- (2) The temperature measurements of the fire test furnace plotted on a comparative graph showing the standard temperature-time curve
- (3) The temperature measurements of the unexposed surface of the fire door assembly
- (4) The pressure differential measurements made between the furnace and the unexposed side of the fire door assembly and the calculation that determines the position of the neutral pressure plane with respect to the bottom of the fire door assembly during the fire test
- (5) All observations of the reactions of the fire door assembly that have an influence on its performance during both the fire and hose stream tests
- (6) Flaming on the unexposed surface of the door or passing through the fire door assembly
- (7) The magnitude and direction of the movement of any portion of the edges of the door from the original position
- (8) A description of the fire door assembly, including fasteners and attachments and other hardware, as they appear after the fire test and the hose stream test
- (9) The materials and construction of the fire door assembly, details of installation including hardware, door frame, and wall anchors, hangers, guides, trim, finish, and clearance or lap, in order to ensure positive identification and duplication of the fire door assembly in all respects
- (10) The actual duration of the fire test

8.1.3 The fire protection rating of the fire door assembly that successfully meets the performance criteria specified in Chapter 7 shall also be reported.

8.1.3.1 The fire protection rating shall be based on and shall not be greater than the duration of the fire test and shall be assigned in accordance with one of the following:

- (1) 20 minutes
- (2) 30 minutes
- (3) $\frac{3}{4}$ hour
- (4) 1 hour
- (5) $1\frac{1}{2}$ hours
- (6) 3 hours
- (7) Hourly increments for ratings over 3 hours

8.1.3.2 Where the fire protection rating is 30 minutes or longer, a correction shall be applied for variation of the furnace exposure time from that prescribed in 4.2.3 in those cases where it affects the fire protection rating.

8.1.3.2.1 The correction described in 8.1.3.2 shall be done by multiplying the indicated duration by two-thirds of the difference in area between the curve of the average furnace temperature and the standard temperature-time curve for the first three-fourths of the test duration and then dividing the product by the difference in area between the standard temperature-time curve and a baseline of 20°C (68°F) for the same portion of the test, increasing the latter area by 30°C/hr (54°F/hr) [1800°C/min (3240°F/min)] to compensate for the thermal lag of the furnace thermocouples during the first part of the test.

8.1.3.2.2 For fire exposures in the test higher than the standard temperature-time curve, the indicated fire protection rating shall be increased by the amount of the correction and shall be decreased similarly for fire exposure below the standard temperature-time curve.

8.1.3.2.3 The correction shall be expressed by the following formula:

[8.1.3.2.3]

$$C = \frac{2I(A - A_s)}{3(A_s + L)}$$

where:

C = correction in the same unit as I

I = indicated fire protection rating

A = area under the curve of the indicated average furnace temperature for the first three-fourths of the indicated rating period

A_s = area under the standard temperature-time curve for the same part of the indicated fire protection rating

L = lag correction in the same units as A and A_s [30°C/hr (54°F/hr); or 1800°C/min (3240°F/min)]

8.1.4 The results of the hose stream test shall be documented.

Annex A Explanatory Material

Annex A is not a part of the requirements of this NFPA document but is included for informational purposes only. This annex contains explanatory material, numbered to correspond with the applicable text paragraphs.

A.3.3.2 Fire Protection Rating. The acceptance criteria for determining fire protection ratings for fire door assemblies are described in this standard and those for fire window assemblies are described in NFPA 257. Fire protection ratings are different from fire resistance ratings. See also Section B.4.

A.3.3.3 Fire Resistance Rating. Fire resistance ratings are typically determined by testing to ASTM E119, *Standard Test Methods for Fire Tests of Building Construction and Materials*.

A.4.1.1 See Table A.4.1.1 for times and temperatures that comprise the standard temperature-time curve for control of fire tests.

A.6.2.1 Additional information on the hose stream application can be found in Section B.13.

A.6.2.2 The elimination of the hose stream test for some 20-minute-rated assemblies is based on their field application.

A.6.2.6 In Table 6.2.4, the exposed area is permitted to be calculated using the outside dimensions of the test specimen, including a frame, hangers, tracks, or other parts of the assembly, if provided, but normally not including the wall into which the specimen is mounted. Where multiple test specimens are mounted in the same wall, the rectangular or square wall area encompassing all of the specimens is considered the exposed area, since the hose stream has to traverse this area during its application.

Table A.4.1.1 Standard Temperature-Time Curve for Control of Fire Tests

Time (hr:min)	Temperature (°C)	Area Above 20°C Base		Temperature (°F)	Area Above 68°F Base	
		°C-min	°C-hr		°F-min	°F-hr
0:00	20	0	0	68	0	0
0:05	538	1,290	22	1,000	2,330	39
0:10	704	4,300	72	1,300	7,740	129
0:15	760	7,860	131	1,399	14,150	236
0:20	795	11,650	194	1,462	20,970	350
0:25	821	15,590	260	1,510	28,050	468
0:30	843	19,650	328	1,550	35,360	589
0:35	862	23,810	397	1,584	42,860	714
0:40	878	28,060	468	1,613	50,510	842
0:45	892	32,390	540	1,638	58,300	971
0:50	905	36,780	613	1,661	66,200	1,103
0:55	916	41,230	687	1,681	74,220	1,237
1:00	927	45,740	762	1,700	82,330	1,372
1:05	937	50,300	838	1,718	90,540	1,509
1:10	946	54,910	915	1,735	98,830	1,647
1:15	955	59,560	993	1,750	107,200	1,787
1:20	963	64,250	1,071	1,765	115,650	1,928
1:25	971	68,990	1,150	1,779	124,180	2,070
1:30	978	73,760	1,229	1,792	132,760	2,213
1:35	985	78,560	1,309	1,804	141,420	2,357
1:40	991	83,400	1,390	1,815	150,120	2,502
1:45	996	88,280	1,471	1,826	158,890	2,648
1:50	1,001	93,170	1,553	1,835	167,700	2,795
1:55	1,006	98,080	1,635	1,843	176,550	2,942
2:00	1,010	103,020	1,717	1,850	185,440	3,091
2:10	1,017	112,960	1,882	1,862	203,330	3,389
2:20	1,024	122,960	2,049	1,875	221,330	3,689
2:30	1,031	133,040	2,217	1,888	239,470	3,991
2:40	1,038	143,180	2,386	1,900	257,720	4,295
2:50	1,045	153,390	2,556	1,912	276,110	4,602
3:00	1,052	163,670	2,728	1,925	294,610	4,910
3:10	1,059	174,030	2,900	1,938	313,250	5,221
3:20	1,066	184,450	3,074	1,950	332,000	5,533
3:30	1,072	194,940	3,249	1,962	350,890	5,848
3:40	1,079	205,500	3,425	1,975	369,890	6,165
3:50	1,086	216,130	3,602	1,988	389,030	6,484
4:00	1,093	226,820	3,780	2,000	408,280	6,805
4:10	1,100	237,590	3,960	2,012	427,670	7,128
4:20	1,107	248,430	4,140	2,025	447,180	7,453
4:30	1,114	259,340	4,322	2,038	466,810	7,780
4:40	1,121	270,310	4,505	2,050	486,560	8,110
4:50	1,128	281,360	4,689	2,062	506,450	8,441
5:00	1,135	292,470	4,874	2,075	526,450	8,774
5:10	1,142	303,660	5,061	2,088	546,580	9,110
5:20	1,149	314,910	5,248	2,100	566,840	9,447
5:30	1,156	326,240	5,437	2,112	587,220	9,787
5:40	1,163	337,630	5,627	2,125	607,730	10,129
5:50	1,170	349,090	5,818	2,138	628,360	10,473
6:00	1,177	360,620	6,010	2,150	649,120	10,819
6:10	1,184	372,230	6,204	2,162	670,000	11,167

(continues)

Table A.4.1.1 *Continued*

Time (hr:min)	Temperature (°C)	Area Above 20°C Base		Temperature (°F)	Area Above 68°F Base	
		°C-min	°C-hr		°F-min	°F-hr
6:20	1,191	383,900	6,398	2,175	691,010	11,517
6:30	1,198	395,640	6,594	2,188	712,140	11,869
6:40	1,204	407,450	6,791	2,200	733,400	12,223
6:50	1,211	419,330	6,989	2,212	754,780	12,580
7:00	1,218	431,270	7,188	2,225	776,290	12,938
7:10	1,225	443,290	7,388	2,238	797,920	13,299
7:20	1,232	455,380	7,590	2,250	819,680	13,661
7:30	1,239	467,540	7,792	2,262	841,560	14,026
7:40	1,246	479,760	7,996	2,275	863,570	14,393
7:50	1,253	492,060	8,201	2,288	885,700	14,762
8:00	1,260	504,420	8,407	2,300	907,960	15,133

Annex B Commentary

This annex is not a part of the requirements of this NFPA document but is included for informational purposes only.

B.1 Introduction. This commentary has been prepared to provide the user of NFPA 252 with background information on the development of the standard and its application in the fire protection of buildings. It also provides guidance in the planning and performance of fire tests and in the reporting of results. No attempt has been made to incorporate all of the available information on fire testing in this commentary. The serious student of fire testing is strongly urged to examine the referenced documents for a better appreciation of the history of fire-resistant design and the intricate problems associated with testing and with interpretation of test results.

B.2 Application.

B.2.1 Compartmentation of buildings by fire-resistive walls has been recognized for many years as an effective method of restricting fires to their area of origin [1–7] or limiting their spread. The functional use of buildings, however, demands a reasonable amount of communication between compartments, necessitating openings in these fire-resistive walls. Fire door assemblies are utilized to protect these openings and maintain the integrity of the fire barrier [8]. Openings in walls have been traditionally classified by fire protection standards [6, 9, 10] and building codes in accordance with the location and purpose of the wall in which the opening exists. However, such classifications were deleted from these standards and codes in the early 1990s. Instead, these standards and codes specify the fire protection rating of the door assembly required to protect the openings.

B.2.2 Fire protection standards and building codes permit labeled vision panels and other openings, such as labeled ventilation louvers, in some fire door assemblies. The model building codes, NFPA 80 [6], and the specific fire door manufacturer's listing should be referenced for information on the types and sizes of these openings.

B.2.3 Fire door assemblies should be properly installed to maintain their fire protection rating. NFPA 80 [6], and the specific fire door manufacturer's listing should be consulted for

details on the installation of fire door assemblies and for limitations on the application of specific labeled fire doors.

Δ B.3 Historical Aspects. The first effort to test fire doors was reported in a series of tests conducted in Germany in 1893 [11–13]. The British Fire Prevention Committee began testing in 1899 and produced a Standard Table of Fire Resisting Elements, including Fire Resisting Doors [1]. Underwriters Laboratories Inc. was involved in testing and listing fire doors shortly after 1900, using its own standards. In 1941, ASTM adopted ASTM E152, *Standard Methods of Fire Tests of Door Assemblies*, on fire door assembly tests. NFPA 252 was first issued by NFPA in 1942. ASTM E152 was withdrawn by ASTM in 1995 and replaced by ASTM E2074, *Standard Test Method for Fire Tests of Door Assemblies, Including Positive Pressure Testing of Side-Hinged and Pivoted Swinging Door Assemblies*, which was, in turn, withdrawn in 2007 to avoid duplication with NFPA 252.

B.4 Scope and Significance.

B.4.1 NFPA 252 provides methods for measuring the relative performance of fire door assemblies where exposed to predetermined standard fire conditions. This standard provides for testing of several types and methods of door operation including swinging, sliding, rolling, and sectional doors [6]. Since the effectiveness of the opening protection is dependent upon the entire assembly, proper attention should be paid to the installation as a unit. Accordingly, fire door assemblies are required to be tested as an assembly of all necessary elements and equipment, including the door frame, hardware, and any glazing or other openings in the assembly.

B.4.2 Fire protection ratings are assigned to indicate that the fire door assembly has continued to perform as required for periods of ⅓ hour, ½ hour, ¾ hour, 1 hour, 1½ hours, or 3 or more hours. Labels on assemblies formerly carried the letter designations of A, B, C, D, or E. These letter designations were not a part of the NFPA 252 standard classification system but were used to designate the class of opening for which the door was intended to protect as determined by codes and other standards [6, 9].

B.4.3 The ⅓-hour, or 20-minute, fire protection-rated door is relatively new. Concern about the uniform adequacy of the

44.7 mm (1¾ in.) solid bonded wood core door construction and the difficulty of determining the equivalency of other types of doors led to a voluntary consensus to test such doors for 20 minutes in the test furnace described in this standard using the same acceptance criteria specified for door assemblies traditionally tested for longer periods of time, with the exception that the hose stream test required by this test method might not be required by regulatory codes.

B.4.4 It is common for a fire door to have a fire protection rating lower than the wall fire resistance rating in which it is installed. For example, a 1½-hour fire protection-rated door can be required in a wall having a fire resistance rating of 2 hours. This is justified in part by the fact that, under normal conditions of use, the potential fire exposure in the vicinity of a door opening is decreased, since there will usually be a clear space on both sides of the opening for traffic purposes. Since wall assemblies are put together at the site, their uniformity is not as certain as a fire door assembly that is factory assembled (e.g., undesigned penetrations tend to show up in wall assemblies). For this reason, any factor of safety that is tacitly called for in a wall assembly requirement should exceed that of a door assembly. If the opening is not used, combustibles could be piled against the door, and the assumed enclosure protection might not be maintained. In these instances, ratings for the openings should be equivalent to the rating of the wall, or precautions should be taken to prevent storage of combustibles against the doors [2, 6].

B.5 Limitations.

B.5.1 The NFPA 252 test methods are intended for the door to be tested until the performance criteria are met for the desired exposure period or for a shorter period. The test methods are not intended to determine that a fire door subjected to a building fire is satisfactory for use following the fire.

B.5.2 The variations in material performance preclude any prediction of an assembly's performance in walls other than those types used in the test. The standard also makes no provisions for measuring the generation of smoke and gases or other products of combustion from the unexposed side of the door. Temperature measurements on the unexposed surface of the door are stopped after 30 minutes.

B.6 Furnace.

B.6.1 The test methods provide details on the operation characteristics and temperature-measurement requirements of the test furnace. The walls of the furnace typically should be of furnace refractory materials and should be sufficiently rugged to maintain the overall integrity of the furnace during the fire exposure period.

B.6.2 The thermocouples in the furnace are located 152 mm (6 in.) from the face of the door or the wall in which the door is installed. Otherwise, no furnace depth is specified. A depth of 203 mm to 457 mm (8 in. to 18 in.) is considered desirable by most laboratories. Reference documents should be consulted for a more comprehensive review of furnace design and performance [14, 15].

B.7 Temperature-Time Curve.

B.7.1 A specific temperature-time relationship for the test fire is defined in the standard. The actual recorded temperature-time condition obtained in the furnace is required to be within specified percentages of those of the standard curve. The

number and type of temperature-measuring devices are outlined in the standard. Specific standard practices for location and use of these temperature-measuring devices are also outlined in the standard.

B.7.2 The standard temperature-time ($T-t$) curve used in NFPA 252 represents a severe building fire [3]. The curve was adopted in 1918 as a result of several conferences by 11 technical organizations, including testing laboratories, insurance underwriters, fire protection associations, and technical societies [7, 10, 16]. It should be recognized that the $T-t$ relationship of these test methods represents only one real fire situation [7, 16–27].

B.8 Furnace Control. The standard contains specific instruction for measuring temperatures in the furnace and for selection of the required thermocouples. Thermocouples of the design specified are sufficiently rugged to retain accuracy throughout anticipated test periods. However, their massive construction causes a significant delay in their response to temperature change and results in temperatures exceeding the indicated temperatures during the early stages of the test period when the temperature rises rapidly. The iron or porcelain tubes surrounding the junction and leads of the thermocouple provide a shield against degradation of the junction and increase the thermal inertia. It is customary for laboratories to replace furnace thermocouples after three or four accumulated hours of use.

B.9 Unexposed Surface Temperature.

B.9.1 Conditions of acceptance for fire-resistive walls specify that the temperature increase on the unexposed surface of the wall not exceed an average of 140°C (250°F) above ambient and that there be no passage of flames or gases hot enough to ignite combustibles. It is obvious that the necessity of maintaining some clearances for efficient operation of the door and the possibility of warping preclude any attempt to restrict escape of gases and minor flames on the periphery of doors.

B.9.2 The standard describes a standard procedure for measuring the unexposed surface temperatures. However, unexposed surface temperatures are not a mandatory performance criterion for NFPA 252. Building regulations do restrict temperature transmission for some wall-opening protectives [6, 9]. For instance, it is usual for codes to limit the temperature rise on the unexposed side of fire doors protecting exit stairways to 250°C (450°F) during the first 30 minutes of the test. This criterion assumes that a higher temperature would provide enough radiant heat to discourage, if not prevent, occupants from passing by the door during an emergency. It is current practice for testing laboratories to provide labels on fire doors indicating that the maximum transmitted temperature on the unexposed side is 140°C, 250°C, or 361°C (250°F, 450°F, or 650°F) above ambient. If not indicated on the label, the temperature rise during the first 30 minutes might or might not be in excess of 361°C (650°F). Temperature rise on the unexposed side of glass panels and louvers is not measured.

B.10 Test Assemblies.

B.10.1 NFPA 252 provides a relative measure of performance for door assemblies. In order to establish confidence that the tested doors will perform in a building as expected, the tested assembly and its installation in the test frame need to be representative of actual use conditions. Therefore, NFPA 80 [6], or